



MATERIALS AND ACCESSORIES

KONE N MiniSpace™ DX, KONE MiniSpace™ DX,
KONE N MonoSpace® DX, KONE S MonoSpace® DX

MATERIALS AND ACCESSORIES FOR ELEVATOR CAR INTERIORS

This catalog presents our full selection of elevator car interior materials and accessories.

All the options included in our offering are designed to be both visually appealing and functional.

The materials and accessories presented in this catalog are available for KONE N MiniSpace™ DX, KONE MiniSpace™ DX, KONE N MonoSpace® DX, and KONE S MonoSpace® DX.



reddot winner 2020

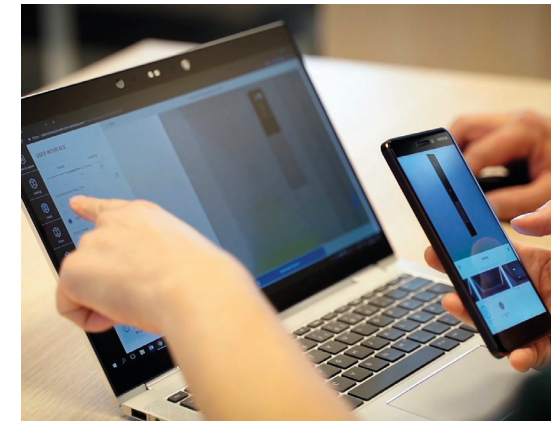
Wall finishes	3
Floor finishes	4
Door finishes	5
Ceilings	6
Handrails	6
Skirting	6
Standard mirrors	7
Tenant directories and mediascreens	7
Scenic elevators	8

Whatever type of building you're developing, we have a solution to fit your design, budget, and building-use requirements.



BUILD SMARTER

Take advantage of our new planning tools to help you save time, make the right decisions, and plan your elevator car interior down to the very last detail.



KONE CAR DESIGNER

Check out our themed design directions or create your own unique car interior by combining materials, lighting, and accessories, then bring your vision to life with 3D modeling.

KONE CAR DESIGNER MOBILE APP

Bring your elevator car designs to life with immersive virtual, mixed, and augmented reality experiences through your smartphone.

TRY OUR PLANNING TOOLS




www.kone.my



ATTRACTIVE, DURABLE WALL FINISHES

Design a car interior that's easier than ever to clean and maintain with our new range of functional materials. Our specialized anti-stain, anti-fingerprint coating helps keep colored stainless steel surfaces looking as good as new by preventing staining and making fingerprints less visible.

* Anti-stain, anti-fingerprint coating:
This specialized coating helps keep colored stainless steel elevator materials looking as good as new by preventing staining and making fingerprints less visible.

 Green Mark
 LEED/BREEAM
 LEED/BREEAM and Green Mark

STEEL

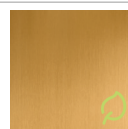
BRUSHED STAINLESS STEEL



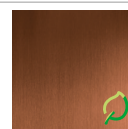
ST4
Silver brushed
stainless steel
ST4AFP with
anti-fingerprint
coating



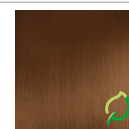
ST4LH
Silver long
hairline



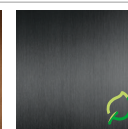
ST2
Gold brushed
stainless steel
ST2AFP with
anti-fingerprint
coating



ST5
Copper brushed
stainless steel
ST5AFP with
anti-fingerprint
coating



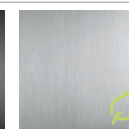
ST6
Bronze brushed
stainless steel
ST6AFP with
anti-fingerprint
coating



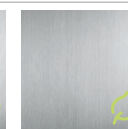
ST7
Carbon black
brushed
stainless steel



CB
Carbon black
brushed
stainless
steel with
anti-fingerprint
coating



ST43
Silver brushed
stainless steel

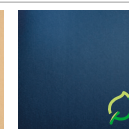


ST43LH
Silver long
hairline

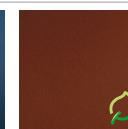
METALLIC PAINTED STEEL



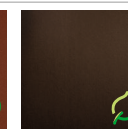
METP1FT
Champagne,
fine textured
metallic painted
steel



METP5FT
Trustworthy
Blue, fine
textured
metallic painted
steel

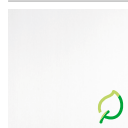


METP6FT
Iron Stone,
fine textured
metallic painted
steel

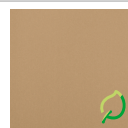


METP7FT
Metallic Black,
fine textured
metallic painted
steel

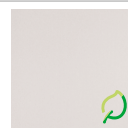
PAINTED STEEL



PP10FT
Pure White,
fine textured
painted steel



PP18FT
Linen Brown,
fine textured
painted steel



PP20FT
Wool Gray,
fine textured
painted steel

ETCHED STAINLESS STEEL



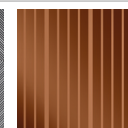
ST28S
Silver Pop,
etched
stainless steel



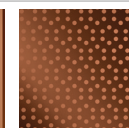
ST31S
Silver High-
rise, etched
stainless steel



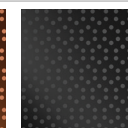
ST44S
Silver Wood,
etched stainless
steel



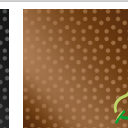
ST36C
Copper
Graphics,
etched
stainless steel



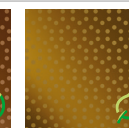
ST42C
Copper
Circle, etched
stainless steel



ST42B
Carbon Black
Circle, etched
stainless steel

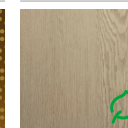


ST42BR
Bronze
Circle, etched
stainless steel



ST42G
Gold Circle,
etched
stainless steel

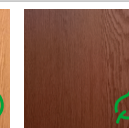
WOODEN PRINTED STEEL



WS1
Light wooden
printed steel

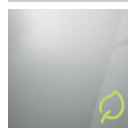


WS2
Warm wooden
printed steel

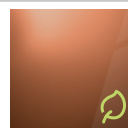


WS3
Dark wooden
printed steel

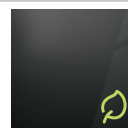
MIRROR-POLISHED STAINLESS STEEL



MP1
Silver mirror
polished
stainless steel

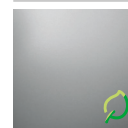


MP4
Copper mirror
polished
stainless steel

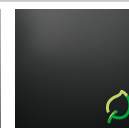


MP5
Carbon Black,
mirror polished
stainless steel

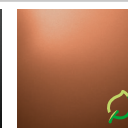
SATIN STAINLESS STEEL



MP6AFP
Silver satin
stainless
steel with
anti-fingerprint
coating

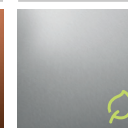


MP8AFP
Carbon black
satin stainless
steel with
anti-fingerprint
coating

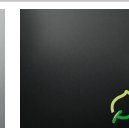


MP9AFP
Copper satin
stainless
steel with
anti-fingerprint
coating

INDIRECT STAINLESS STEEL

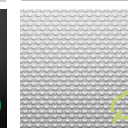


ST21S
Indirect
brushed
stainless steel

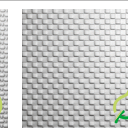


ST21B
Carbon
black indirect
brushed
stainless steel

TEXTURED STAINLESS STEEL



TS2
Flemish Linen



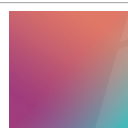
K
Scottish Quad

GLASS

GLASS



GD1
Wide Illusion,
digital printed
glass



GD3
Iridescent,
digital printed
glass



GM2
Dark Silver,
mirror glass



GP6
Natural White,
glass



GP7
Bold Turquoise,
glass

TRANSPARENT GLASS



TW1
Transparent
glass

LAMINATE

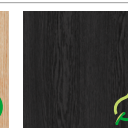
LAMINATE



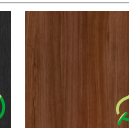
L235
Whiten Ash,
anti-microbial
laminate



L236
Natural Oak,
anti-microbial
laminate

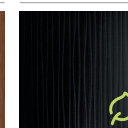


L239
Blackened
Oak, anti-
microbial
laminate

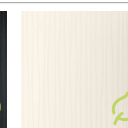


L95
Natural Teak
anti-microbial
laminate

LAMINATE, 3D SURFACE



L101
Black, anti-
microbial
laminate



L102
Cream
white, 3D
anti-microbial
laminate

FLOORS

There are several flooring options to choose from, including composite stone for long-lasting durability even under heavy use. Add the finishing touches to your design vision by creating a customized PVC or stone floor to match the building interior design.


SINGLE-COLOR PVC



D6
Light Brown



D24
Moon White



D25
Rocky Gray



D26
Lava Stone




D27
Saturn Brown

PATTERNED PVC



DG02



DG07

REAL GRANITE



G1R
Rose Black
stone, granite



G2R
Green Black
stone, granite



G4R
Gray Black
(not available
for KONE N
MiniSpace™)
stone, granite



M3R / M3H
Black Golden
Sand stone,
granite

REAL MARBLE



N1R
Castle Gray
stone, marble



N2R
Dark
Emperor
stone, marble

COMPOSITE STONE



M4R / M4H
Nature White,
composite
stone



M5R
Pebble Gray,
composite
stone

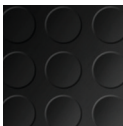


M7R
Light Sand,
composite
stone





M12R
Volakas White,
composite
stone

RUBBER






RC7
Coin pattern,
rubber floor

 Green Mark
LEED/BREEAM
 LEED/BREEAM and Green Mark



DOOR FINISHES

Create a seamless look and feel by matching the elevator door finish with the car interior and landing entrances.

* Not available for KONE N MiniSpace™
 Green Mark
 LEED/BREEAM
 LEED/BREEAM and Green Mark

STEEL

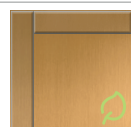
BRUSHED STAINLESS STEEL



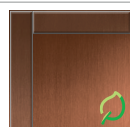
ST4
Silver brushed
stainless steel
ST4AFP with
anti-fingerprint
coating



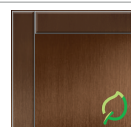
ST4LH
Silver long
hairline



ST2
Gold brushed
stainless steel
ST2AFP with
anti-fingerprint
coating



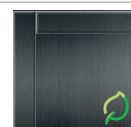
ST5
Copper brushed
stainless steel
ST5AFP with
anti-fingerprint
coating



ST6
Bronze brushed
stainless steel
ST6AFP with
anti-fingerprint
coating



ST7
Carbon black
brushed
stainless steel



CB
Carbon black
brushed
stainless
steel with
anti-fingerprint
coating



ST43
Silver brushed
stainless steel

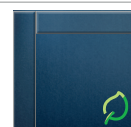


ST43LH
Silver long
hairline

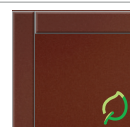
METALLIC PAINTED STEEL



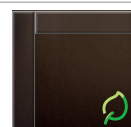
METP1FT
Champagne,
fine textured
metallic painted
steel



METP5FT
Trustworthy
Blue, fine
textured
metallic painted
steel



METP6FT
Iron Stone,
fine textured
metallic painted
steel

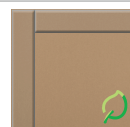


METP7FT
Metallic Black,
fine textured
metallic painted
steel

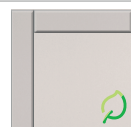
PAINTED STEEL



PP10FT
Pure White,
fine textured
painted steel

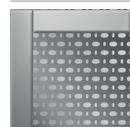


PP18FT
Linen Brown,
fine textured
painted steel



PP20FT
Wool Gray,
fine textured
painted steel

ETCHED STAINLESS STEEL



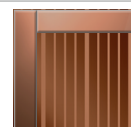
ST28S
Silver Pop,
etched
stainless steel



ST31S
Silver High-
rise, etched
stainless steel



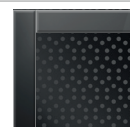
ST44S
Silver Wood,
etched stainless
steel



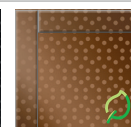
ST36C
Copper Graphics,
etched stainless
steel



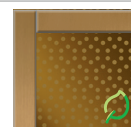
ST42C *
Copper Circle,
etched stainless
steel



ST42B *
Carbon Black
Circle, etched
stainless steel



ST42BR
Bronze
Circle, etched
stainless steel

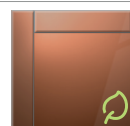


ST42G
Gold Circle,
etched
stainless steel

MIRROR-POLISHED STAINLESS STEEL



MP1
Silver mirror
polished
stainless steel



MP4
Copper mirror
polished
stainless steel



MP5
Carbon Black,
mirror polished
stainless steel

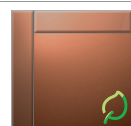
SATIN STAINLESS STEEL



MP6AFP
Silver satin
stainless
steel with
anti-fingerprint
coating



MP8AFP
Carbon black
satin stainless
steel with
anti-fingerprint
coating



MP9AFP
Copper satin
stainless
steel with
anti-fingerprint
coating

INDIRECT STAINLESS STEEL



ST21S
Indirect
brushed
stainless steel

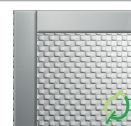


ST21B
Carbon black
indirect brushed
stainless steel

TEXTURED STAINLESS STEEL

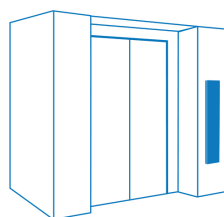


TS2
Flemish Linen



K
Scottish Quad

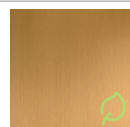
MAP PANEL



BRUSHED STAINLESS STEEL

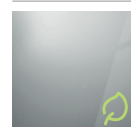


ST4
Silver brushed
stainless steel,
AISI304

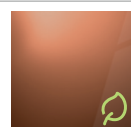


ST2
Gold brushed
stainless steel

MIRROR-POLISHED STAINLESS STEEL



MP1
Silver mirror
polished
stainless steel



MP4
Copper mirror
polished
stainless steel

PAINTED STEEL



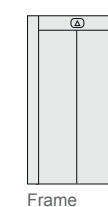
PP10FT
Pure White,
fine textured
painted steel

GLASS

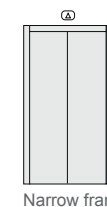
GLASS



TW1
Transparent
glass



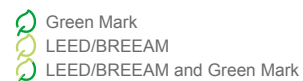
Frame



Narrow frame

CEILING

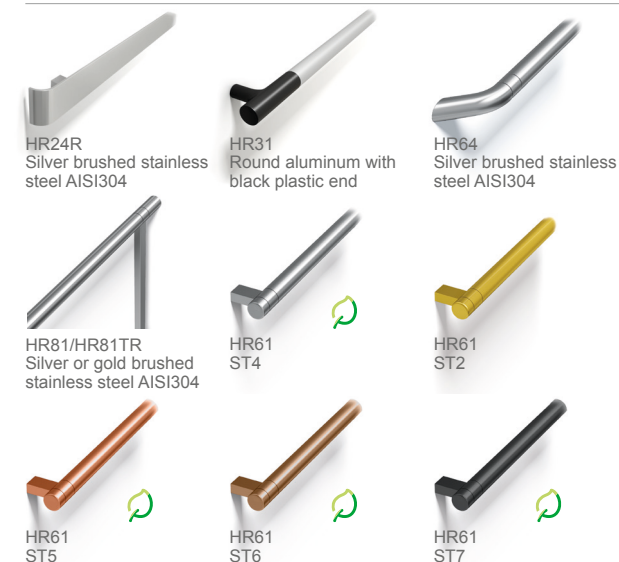
Our extensive range of ceilings is complemented by attractive lighting suitable for different environments.



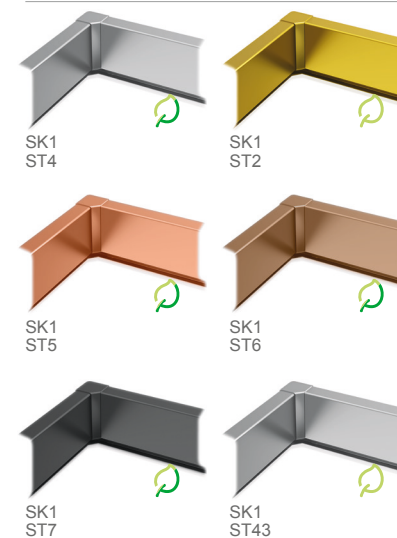
ACCESSORIES

Add the finishing touches with our wide range of elevator accessories.

HANDRAILS



SKIRTING

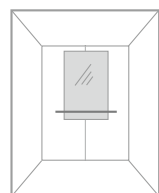


BUFFER RAIL

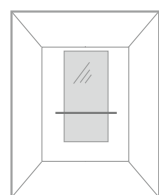


STANDARD MIRRORS

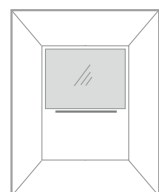
Mirrors are a great way to add a feeling of space and reflect key design elements inside the car.



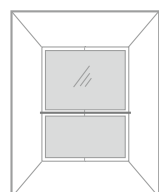
MR1
Partial width
Partial height



MR1
Partial width
Mid height



MR1
Full width
Partial height



MR1
Full width
Full height

TENANT DIRECTORIES AND MEDIASCREENS

KONE TENANT DIRECTORY



Materials:
Brushed stainless steel base
Tempered glass door
Brushed or polished aluminum

The tenant directory is completely customizable and can be easily updated according to your needs.

Directories can be installed either vertically or horizontally.

Sizes:



TD2 *



TD2 *

KONE MEDIASCREENS

KONE MediaScreens are installed inside the elevator and take the pain out of communicating with tenants and other users of buildings. There are offline and online versions. Consult your sales representative for more information.

KONE MEDIASCREEN 300

The content is updated online and remotely. The screen can be installed on the elevator wall and comes with the online KONE Information 300 service, a powerful and easy-to-use solution for sharing and scheduling content.



Surface mounted 10.4"
Surface mounted 15"



Flush mounted 10.4"
Flush mounted 15"



15" LCD display
Surface mounted

KONE provides innovative and eco-efficient solutions for elevators, escalators, automatic building doors and the systems that integrate them with today's intelligent buildings.

We support our customers every step of the way; from design, manufacturing and installation to maintenance and modernization. KONE is a global leader in helping our customers manage the smooth flow of people and goods throughout their buildings.

Our commitment to customers is present in all KONE solutions. This makes us a reliable partner throughout the life cycle of the building. We challenge the conventional wisdom of the industry. We are fast, flexible, and we have a well-deserved reputation as a technology leader, with such innovations as KONE MonoSpace® DX, KONE NanoSpace™ and KONE UltraRope®.

KONE employs close to 57,000 dedicated experts to serve you globally and locally.

KONE CORPORATION

Corporate offices

KONE ELEVATOR (M) SDN BHD
3rd Floor, Wisma Ali Bawal 2, No. 11,
Jalan Tandang,
46050 Petaling Jaya, Selangor, Malaysia
Tel : +603 7494 7500
Fax: +603 7784 1263
www.kone.my

Penang

86-1-5, 86 Avenue Residences
Lengkok Perak,
10150 Penang
Tel : + 604 283 9999
Fax : + 604 283 9988

Johor

Lot 1, Jalan Kempas Utama 3/6,
Taman Kempas Utama,
81300 Johor Bahru, Johor
Tel : + 607 559 0885
Fax : + 607 559 0886

Sabah

Lot No. 3A, Block D,
Lorong Pusat Komersil 88/2
88 Marketplace, Jalan Pintas,
88300 Kota Kinabalu, Sabah
Tel : + 6088 251 988
Fax : + 6088 252 988

DISTRIBUTORS IN SOUTH EAST ASIA

Brunei

Yusoki Sdn Bhd
Tel : + 673 2790 037

Sarawak (Malaysia)

Elebest Engineering Sdn Bhd
Tel : + 60 82 365836

This publication is for general informational purposes only and we reserve the right at any time to alter the product design and specifications. No statement in this publication shall be construed as a warranty or condition, express or implied, as to any product, its fitness for any particular purpose, merchantability, quality or representation of the terms of any purchase agreement. Minor differences between printed and actual colors may exist. KONE MonoSpace® DX, KONE EcoDisc®, KONE Care® and People Flow® are registered trademarks of KONE Corporation. Copyright © 2020 KONE Corporation.